

Q: WHY SHOULD I TAKE A DRIVEABLE ASSESSMENT?

A: Your Doctor may have recommended this assessment based on your medical history. Medical conditions can cause even the best driver to become unsafe. Driving is a complex task in which memory, attention, judgment and other cognitive abilities are used in concert to guide successful performance. Many medical conditions such as Memory Loss, Stroke, Heart Disease, and Diabetes can impact driving abilities. Even if no single condition is severe, several conditions can combine to make a person unsafe to drive. Medications can also affect your ability to drive safely.

Driving skills can change. Drivers with cognitive impairment are over 3 times more likely to cause a crash.*

Help keep you, your loved ones, and your community safe. Through knowledge and self-awareness, you can make better decisions about when to get behind the wheel, and when to seek other forms of transportation.

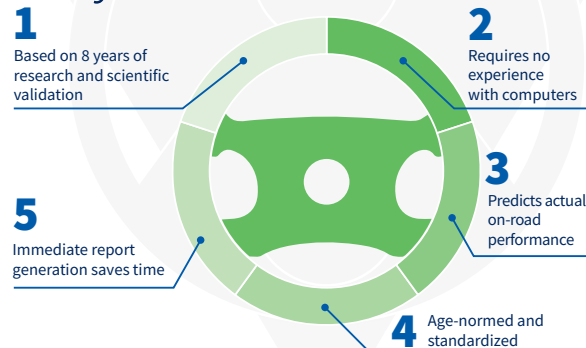
* Source: Diller, E., Cook, L., Leonard, D., et al. (1999). Evaluating drivers licensed with medical conditions in Utah, 1992-1996. DOT HS 809 023. Washington, DC: National Highway Traffic Safety Administration.

Q: WHY SHOULD I TRUST DRIVEABLE?

A: DriveABLE provides an unbiased and objective measure of the cognitive skills required for driving.

- Over 150,000 assessments have been completed across North America.
- Developed to protect safe drivers from misidentification due to diagnosis or age.
- Results are compared with drivers of the same age.
- Research has demonstrated fairness for both urban and rural drivers.
- Better Business Bureau accredited for over seven years.
- Recipient of the 1999 Prix d'Excellence, Claude P. Beaubien – Award of Excellence from The Alzheimer Society of Canada.

Why It Works



What To Expect During Your Upcoming DriveABLE Cognitive Assessment

Adult Driver Services
An affiliate of Driver Safety Consultants

I HAVE AN UPCOMING COGNITIVE ASSESSMENT

Q: WHAT DOES THIS MEAN?

A: Your doctor wants more details on your brain's ability to observe and process information. The DriveABLE assessment measures the cognitive abilities we need to drive safely.

COGNITION IS THE ABILITY TO:



Q: WHAT SHOULD I EXPECT DURING MY DRIVEABLE ASSESSMENT?

A: The DriveABLE Cognitive Assessment Tool (DCAT) is a simple test that consists of four tasks. These tasks are performed on a touch screen tablet (pictured below). All that is required during these four tasks:

- Follow the prompts on the tablet screen
- Using your finger to interact with the tablet screen
- Turn the tablet like a steering wheel



During your assessment, you won't be alone. Throughout your assessment you will have a DriveABLE trained and certified assessor by your side. They will set you up for the assessment, and answer any questions you may have. A demonstration will be provided, and you will have an opportunity to practice each task before testing starts. No experience with tablets or computers is required.

BEFORE AND AFTER AN ASSESSMENT

ON THE DAY OF THE ASSESSMENT

- Please do not drive yourself to the assessment; have someone drive you or use alternate transportation.
- Please bring your driver's license. If you do not have a valid license, please let us know.
- If you need glasses for reading or driving, or if you wear hearing aids (make sure you have fresh batteries), please bring them with you.
- Please continue to take any medication as prescribed, or as your normally would prior to driving.
- The assessment will take approximately 30 – 45 minutes to complete.

AFTER THE ASSESSMENT

- We strongly recommend that you do not drive until you have spoken to your physician about the results of the assessment.
- After the assessment, please make an appointment to see your doctor.
- Your results will be sent to your doctor, usually within two working days after your assessment.
- If you require the results to be sent sooner, please let your doctor know.

